

HOT DAYS, SERIOUS RISKS

PROTECT YOUR DOG FROM HEAT STROKE

DOG TEMPERATURE



41-42°C
HEAT STROKE

40°C
HEAT EXHAUSTION

38°C
NORMAL

SIGNS OF HEAT STROKE

- Heavy panting, difficulty breathing, excessive thirst
- Bright red tongue and mucus membranes, which turn grey as shock sets in
- Thick saliva, drooling, vomiting, and/or diarrhea
- Unsteadiness and staggering
- Lethargy

BY THE TIME SIGNS OF HEAT STROKE ARE VISIBLE, IT'S OFTEN TOO LATE.

DANGERS OF HEAT STROKE

40°C
BODY TEMP

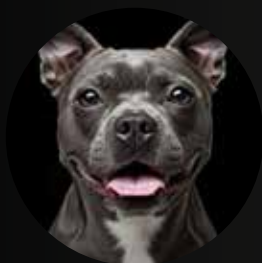
+

MORE THAN
15 MIN
SUFFERING

=

CAN CAUSE
collapse | seizures | coma
organ failure | death

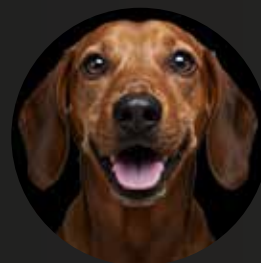
DOGS WHO ARE MORE AT RISK



SHORT-NOSED
ex. Pug, Bulldog



LONG-HAIRED
ex. Border Collie,
Lhasa Apso



YOUNG & SENIORS
ex. puppies, dogs
7+ yrs. old

